

Palazzo

2 BEDROOM - 2 BATHROOM - 2.5 CAR GARAGE



Some features and specifications may vary depending on the architectural style and community.

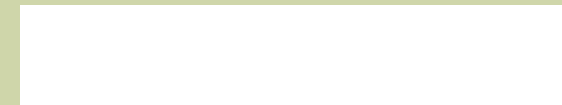


Exterior Features

The Palazzo is a beautifully designed, free-standing home that wraps around its very own private, garden courtyard.

- European Country Collection
- Cultured stone fronts and stone water table
- Low-E glass windows
- Covered entryway
- Private, garden courtyard
- 2.5 car garage
- Decorative fencing included around courtyard

Base Price



Palazzo

2 BEDROOM - 2 BATHROOM - 2.5 CAR GARAGE



*Optional courtyard features shown: Artificial turf, landscaping, Trellis/Pergola, Plant walls (2), Water feature and Stepping stone paths (Palazzo and Portico only).

©

Interior Features

Enjoy all the convenience of single-story living, plus thoughtfully planned privacy features accenting this home. We've considered your view from every angle. So no matter which way you look, you'll like what you see.

- 9 foot ceilings throughout
- 10 foot trays in various locations
- Courtyard views from the owner's suite, dining room, kitchen and living room
- Fully equipped energy efficient appliances including refrigerator
- Kitchen island
- Large owner's suite with walk-in closet and private bath
- Expansive laundry room
- 4-season room available
- Sitting room, covered porch or screened porch available
- Sq. Ft. range: 1,519 - 2,034

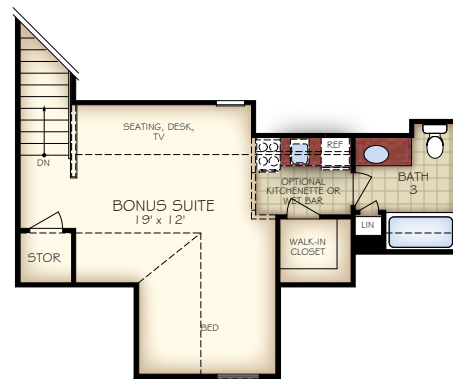
Although all floor plans, illustrations, and specifications are believed correct at the time of publication, the right is reserved to make changes, without notice or obligation. Details may vary depending on the options and elevations selected. This information is for illustrative purposes only and not part of a legal contract.



Palazzo Bonus Suite



FIRST FLOOR PLAN W/
OPTIONAL BONUS SUITE



OPTIONAL SECOND FLOOR
BONUS SUITE



Interior Features

- Bedroom
- Private bathroom
- Open living room
- Two additional storage closets
- Kitchenette available
- Wet bar available

Bonus Suite Uses:

- Home office
- Guest room
- Game room
- Craft Room
- You decide!

Although all floor plans, illustrations, and specifications are believed correct at the time of publication, the right is reserved to make changes, without notice or obligation. Details may vary depending on the options and elevations selected. This information is for illustrative purposes only and not part of a legal contract.



Palazzo Basement



Basement Features

- 9' poured walls
- Tuff & Dry exterior water proofing / insulation / 30-year warranty
- Top Chord Bearing floor truss system allows for minimal steps into the home
- Rough-in for a half bath
- Boman and Kemp basement window system – egressable window with larger window well
- Interior AND exterior perimeter drainage system
- Dry-walled ceiling
- Basement stairs are dry-walled and painted gray
- Optional finished basement with 1/2 bath or bath with shower

Although all floor plans, illustrations, and specifications are believed correct at the time of publication, the right is reserved to make changes, without notice or obligation. Details may vary depending on the options and elevations selected. This information is for illustrative purposes only and not part of a legal contract.

